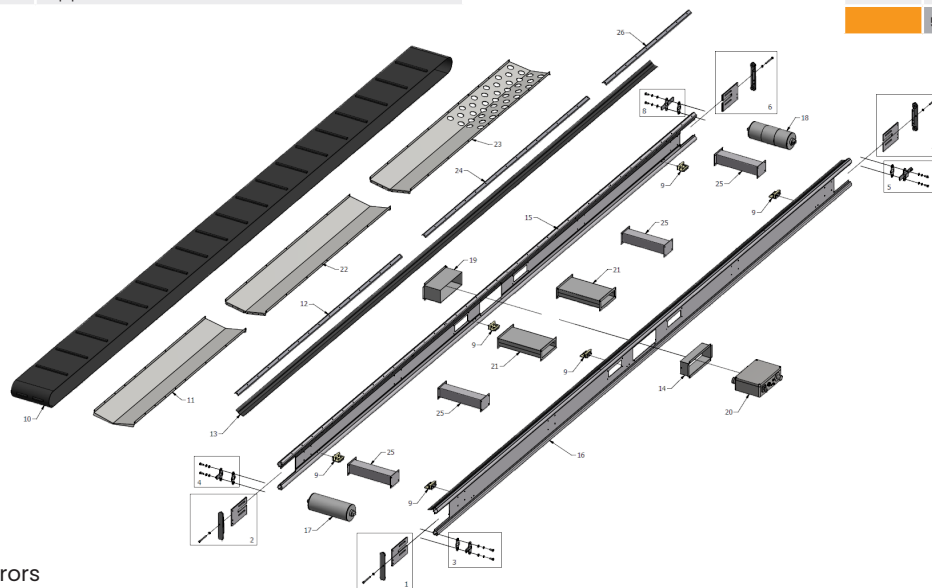


CU 6000 + CU 6000 basic

POS.	PART NO.	DESCRIPTION
1	30216	Insert plate w/bolt f/drum, right
2	30217	Insert plate w/bolt f/drum, left
3	30222	Adjusting bracket drum
4	30222	Adjusting bracket drum
5	30221	Adjusting bracket motor, left
8	30220	Adjusting bracket motor, right
7	30219	Insert plate w/bolt f/motor, left
6	30218	Insert plate w/bolt f/motor, right
15	31027	Left side profile 6000
16	31023	Right side profile 6000
11	31001	Bottom plate 1710 mm
26	31040	Top profile 1300 mm, right
26	31041	Top profile 1300 mm, left
13	31014	PVC side protection, 1 m
19	30246	Insert left for unit box 145 mm
9	30215	Belt guide complete (set) - CU/CCU
25	31060	Connection piece
17	31051	Drum
18	31052	Motor CU/CCU incl plug
14	30245	Insert right for unit box 80 mm
21	31059	Connection piece fork protection
22	31002	Bottom plate 1900 mm
23	31008	Bottom plate 2135 mm with holes
24	31043	Top profile 2500 mm
12	31043	Top profile 2500 mm

POS.	PART NO.	DESCRIPTION
10	32003	PVC belt 6000, no cleats
10	31013	PVC belt 6000
10	32007	PVC belt 6000 20 mm, cleats
10	32011	PVC belt 6000 40 mm, cleats
10	32015	PVC belt 6000 60 mm, cleats
10	32019	PVC belt 6000 20 mm, V-chevron cleats
10	32023	PVC belt 6000 60 mm, wavy edge cleats
	50340	Rubberwheel (1 pc) for undercarriage
	30213	Catch for undercarriage and for hopper
20	31081	CU unit 240V basic
20	31085	CU unit 110V basic
20	31080	CU unit 240V
20	31084	CU unit 110V
	32204	CU unit 240V basic - renovated
	32205	CU unit 110V basic - renovated
	32200	CU unit 240V - renovated
	32202	CU unit 110V - renovated
	30229	Emergency stop, complete
	30232	Changeover forwards/backwards switch
	30234	Potentiometer/speed controle, complete
	30227	CU/CCU plug IN
	30228	CU/CCU plug OUT
	30235	Miniature fuse 63mA for CU/CCU unit
	30250	Frictionband for engine
	30053	CU/CCU connection cable, 7 m
	50105	Adapter cable 240V 10A w/CEE and Schuko plug



Subject to printing errors